

SIMULATION OF AERODYNAMIC INSTABILITY OF BUILDING STRUCTURES ON THE EXAMPLE OF A BRIDGE SECTION. PART 2: SOLUTION OF THE PROBLEM IN A COUPLED AEROELASTIC FORMULATION AND COMPARISON WITH ENGINEERING ESTIMATES

Alexander M. Belostotsky^{1,2,3}, *Irina N. Afanasyeva*^{1,4}, *Irina Yu. Negrozova*²,
Oleg S. Goryachevsky^{1,2}

¹ Scientific Research Center StaDyO, Moscow, RUSSIA

² National Research Moscow State University of Civil Engineering, Moscow, RUSSIA

³ Russian University of Transport (RUT - MIIT), Moscow, RUSSIA

⁴ University of Florida, Gainesville, Florida, USA

Abstract: In this paper, we study aerodynamic instability using the example of a two-dimensional problem of flow around a simplified section of a flexible suspension bridge (on the Tacoma River, USA). A direct dynamic coupled calculation was performed to determine the critical speed of manifestation of aerodynamic instability. The results obtained were compared with the results of engineering estimates presented in [40]. This example shows that to solve such problems it is possible to use the lighter des turbulence model instead of the les turbulence model and, therefore, a coarser mesh. In contrast to existing engineering techniques, direct numerical modeling of the interaction between the structure and the air flow allows one to take into account the reverse effect of the structure on the flow, as well as the mutual influence of several types of aerodynamic instability.

Keywords: aerodynamic instability, galloping, divergence, FSI, URANS SST turbulence model, DES SST turbulence model

МОДЕЛИРОВАНИЕ АЭРОДИНАМИЧЕСКОЙ НЕУСТОЙЧИВОСТИ СТРОИТЕЛЬНЫХ КОНСТРУКЦИЙ НА ПРИМЕРЕ СЕЧЕНИЯ МОСТА. ЧАСТЬ 2: РЕШЕНИЕ ЗАДАЧИ В СВЯЗАННОЙ АЭРОУПРУГОЙ ПОСТАНОВКЕ И СОПОСТАВЛЕНИЕ С ИНЖЕНЕРНЫМИ ОЦЕНКАМИ

А.М. Белостоцкий^{1,2,3}, *И.Н. Афанасьева*^{1,4}, *И.Ю. Негрозова*², *О.С. Горячевский*^{1,2}

¹ Научно-исследовательский центр СтаДиО, г. Москва, РОССИЯ

² Национальный исследовательский Московский государственный строительный университет, г. Москва, РОССИЯ

³ Российский университет транспорта (МИИТ), г. Москва, РОССИЯ

⁴ Университет Флориды, г. Гейнсвилл, США

Аннотация: В настоящей работе исследуется аэродинамическая неустойчивость на примере двумерной задачи обтекания упрощенного сечения гибкого подвесного моста (на реке Такома, США). Выполнен прямой динамический связанный расчет для определения критической скорости проявления аэродинамической неустойчивости. Полученные результаты сравнивались с результатами инженерных оценок, представленных в [40]. На данном примере показано, что для решения подобных задач можно использовать более «легкую» модель турбулентности DES вместо модели турбулентности LES и, следовательно, более грубую сетку. В отличие от существующих инже-

нерных методик, прямое численное моделирование взаимодействия конструкции и воздушного потока позволяет учесть обратное влияние конструкции на поток, а также взаимное влияние нескольких видов аэродинамической неустойчивости.

Ключевые слова: аэродинамическая неустойчивость, галопирование, дивергенция, FSI, модель турбулентности URANS SST, модель турбулентности DES SST

1. INTRODUCTION

Long span and flexible structures such as bridges with long spans are highly sensitive to wind influences. Such structures are susceptible to aeroelastic phenomena. Over the past 150 years, many such cases have been known and described. Until the 1940s, the wind load was considered secondary and even its static component was not taken into account. This continued until the most famous destruction of the Tacoma Narrows Bridge in the United States. Almost from the very beginning of construction work, problems with the stability of the bridge began to appear, even in light winds. The bridge immediately gained a reputation as an unstable structure. Due to the fact that the windy weather of the bridge swayed, he was given the nickname "Galloping Gertie". Numerous attempts were made to stabilize the structure, but they could not solve this problem – on November 7, 1940, a collapse occurred as a result of the increasing vibrations of the bridge deck in the air stream. This disaster marked the beginning of an intensive and purposeful study of the interaction of flexible structures with wind flow. The first fundamental scientific works on this topic appeared, namely the works of Theodor von Karman [1], Alan Garnett Davenport [2–3], Barshtein M.F. [4], Simiu [5], Scanlan [5–8], Den Hartog [9]. Based on these studies, engineering methods for assessing the occurrence of aerodynamic instability were developed and introduced into regulatory documents [10–12].

In a number of cases, the issues of wind flow around unique buildings and structures during their design are solved experimentally. For this, the testing of models in laboratory conditions is widely used, as a rule, in wind tunnels (WT).

Experimental studies of the assessment of the aerodynamic characteristics of structures were carried out by such scientists as M.I. Kazakevich [11], S.M. Gorlin [12], Alan Davenport [2, 15], A. Kareem [16], B. Blocken [17] and others.

The experimental approach, which was practically uncontested 20–30 years ago, has a number of serious drawbacks. A correct analysis of the mutual influence of the air flow and the structure is practically impossible in an experiment in a wind tunnel due to the difficulty of observing the similarity of a scale model of a deformable structure. Almost all modern experimental studies are based on the assumption that the structure behaves as an absolutely rigid body, and fluctuations in the flow and damping are imitated by “springs”. In this case, the reverse effect of the deformed structure on the structure of the air flow has been repeatedly confirmed. Failure to take into account the reverse effect can lead to both an overestimation of the critical wind speeds (at best), and their underestimation (in the worst case). Due to the rapid development of mathematical modeling, numerical methods and implementing software systems against the background of an impressive growth in computing power, another approach has been actively developing in recent years – mathematical (numerical) modeling, free from the limitations of physical (experimental) modeling methods. Today it is possible to carry out a direct numerical solution of related problems of aero-hydroelasticity and directly simulate the phenomena of aerodynamic instability without resorting to numerous serious assumptions adopted in experimental methods. As a result, more accurate assessments of the criteria for the occurrence of aerodynamic instability of unique and especially critical flexible structures are

obtained and, as a consequence, their mechanical safety is increased. Among the works devoted to the numerical modeling of the phenomena of aeroelasticity, one can single out [18–38]. Despite the advantages of direct numerical modeling, it also has disadvantages. The main one is high computational complexity. Although, along with the further progress of algorithms and computer technology, this drawback will be more and more overcome, now it seems relevant to develop a universal and more economical approach to assessing the aerodynamic stability of structures. The purpose of this study is to develop a universal approach to assessing the aerodynamic instability of bridge structures in an unsteady wind flow using a preliminary engineering estimate and subsequent direct mathematical (numerical) modeling of the structure's behavior in a coupled aeroelastic formulation.

is considered. This problem was presented by a team of scientists from China at an international conference (The Seventh International Colloquium on Bluff Body Aerodynamics and Applications (BBAA7) Shanghai, China; September 2-6, 2012). They presented their results in [39], which describes their method for solving the problem using the ANSYS Fluent software package in a related setting with the author's software package. The geometric parameters of the section are shown in Fig. 1. When modeling the dynamic behavior of the elastic section, the scheme shown in Fig. 2. The parameters of the material are presented in Table 1. The parameters of elastic connections with linear damping are taken from [39] and are also displayed in the table. In the Ox direction, the geometric center of the section is fixed. A torsional elastic link was applied to the entire cross section on average.

2. FORMULATION OF THE PROBLEM

The problem of interaction of a simplified section of a bridge on the Tacoma River with an air flow

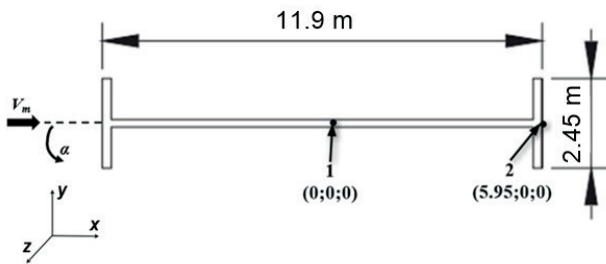


Figure 1. Geometric parameters of the section.

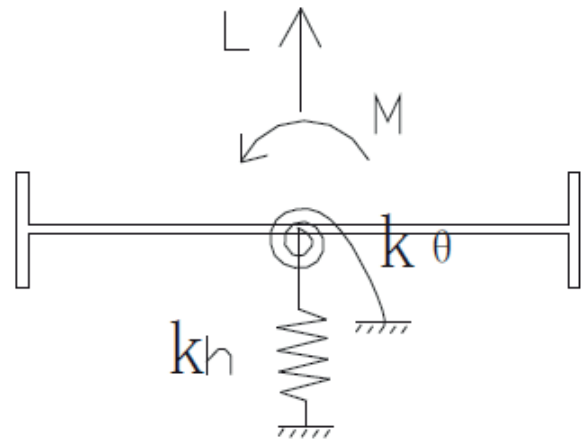


Figure 2. Design model.

Table 1. Material parameters

Material parameters		Parameters of the elastic model of the bridge section	
Density ρ , kg / m ³	1300	Linear weight, kg / m	4250
		Moment of inertia, kgm / m	177 730
Elastic modulus E , Pa	$2.1 \cdot 10^{11}$	Vertical relative damping	0.005
Poisson's ratio ν	0.16	Relative damping by torsional degree of freedom	0.005

Air with constant properties at a temperature of 25°C is considered.

In the course of solving the problem in a related formulation, the following parameters were determined:

- vertical displacements $y_1(t)$ of point 1 and $y_2(t)$ of point 2 (Fig. 1), the position of which changes over time due to wind action on the structure;
- angle of rotation $\theta(t)$, which is calculated as follows:

$$\theta = \arcsin\left(\frac{\Delta y}{L/2}\right) \quad (1)$$

where $\Delta y = y_2 - y_1$ is vertical displacements of point 1 and point 2, respectively.

In order to solve the problem, the ANSYS software package was used. To simulate the fluid – structure interaction (FSI), the “2-way FSI” simulation mode was used – two-way transfer of calculated data between various independent modules in the form of displacements (on the one hand) and loads (on the other side).

3. NUMERICAL SIMULATION METHODOLOGY

3.1. Numerical CFD Setup

The entire computational air domain was divided into finite volumes using the ANSYS Meshing module. Variants of computational grids with

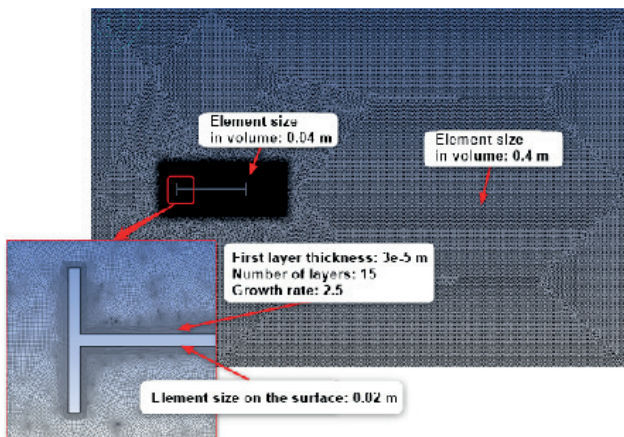


Figure 3. Calculation grid for CFD model: Model 4 (381 894 FE).

indication of the variable parameters were considered in [40]. Model 4 was chosen to simulate the behavior of air (Fig. 3).

The INLET condition ($U = V_{in}$, $V = W = 0$, where U , V , W are the components of the velocity vector, V_{in} is a given constant flow velocity) with a horizontal directional flow velocity uniformly distributed along the height is specified as a boundary condition at the input. On the face opposite from the entrance, “soft” boundary conditions “Opening” were set with the averaged relative pressure equal to zero. On the surface of the streamlined body, the “liquid-structure” interface condition was applied. Symmetry conditions were set on the other faces of the computational domain. Zero flow rate was taken as the initial conditions for the problem.

Since the flow is turbulent at typical Reynolds numbers of $\sim 10^6$ for this problem, the turbulence model must be used to close the Navier-Stokes equations. In this paper, two turbulence models are considered: URANS $k-\omega$ SST and DES SST.

3.2. Numerical CSD Setup

For the Computational Structural Dynamics model (CSD model), a structured finite element model of a bridge section with an element size of 0.05 m was created (Fig. 4).



Figure 4. Computational grid for CSD model: Model 4 (10 913 nodes).

In order to simulate the plane problem, both sides of the section are fixed along the O_z axis, which coincides with the axis of the bridge. The movements of the center point are limited along the O_x axis directed along the wind flow (there are no oscillations in the direction of the flow). The elastic vertical link was modeled by a single spring with damping, one end of which is fixed at the central

point of the section, and the other is motionless (see the parameters of the vertical link in Table 1). The elastic torsional bond is modeled through the so-called Remote Displacement mechanism, when the angle of rotation of the entire section is calculated as the average value of the angles of rotation of all mesh nodes, and, accordingly, this angle and its rate of change cause elastic and viscous components of the reactions, respectively (see the parameters of the torsional bond in Table 1).

3.3. Coupling conditions

The time step size for CFD and CSD solvers is $\Delta t = 0.02$ s. The physical calculation time is 80 s. To ensure the convergence and stability of the solution at each associated time step, it is necessary to set the following calculation parameters:

- the maximum number of iterations at each associated step (maximum number of stagger iterations);
- criterion of convergence for loads and displacements;
- Is the under relaxation factor for calculating loads and displacements at each iteration of the associated step:

$$\varphi = \varphi_{pre} + \alpha(\varphi_{new} - \varphi_{pre}) \quad (2)$$

where φ_{new} is the value of the variable calculated at the current iteration, φ_{pre} is the value of the variable calculated at the previous iteration, α is the relaxation coefficient (by default it is 0.75), φ is the corrected value of the desired value at the current iteration.

In this study, the loads were assigned a constant coefficient of lower relaxation $\alpha = 0.5$, while displacements were transferred without lower relaxation. To achieve the convergence criterion, 5 FSI sub-iterations were assigned (the maximum number of iterations at each related step) and the convergence criterion for loads and displacements was set equal to 10^{-3} .

4. RESULTS

4.1. Results of solving the problem taking in account coupling conditions

Below are the results of solving the problem in a coupled aeroelastic formulation. In fig. 5 shows the obtained graphs of the dependences of the

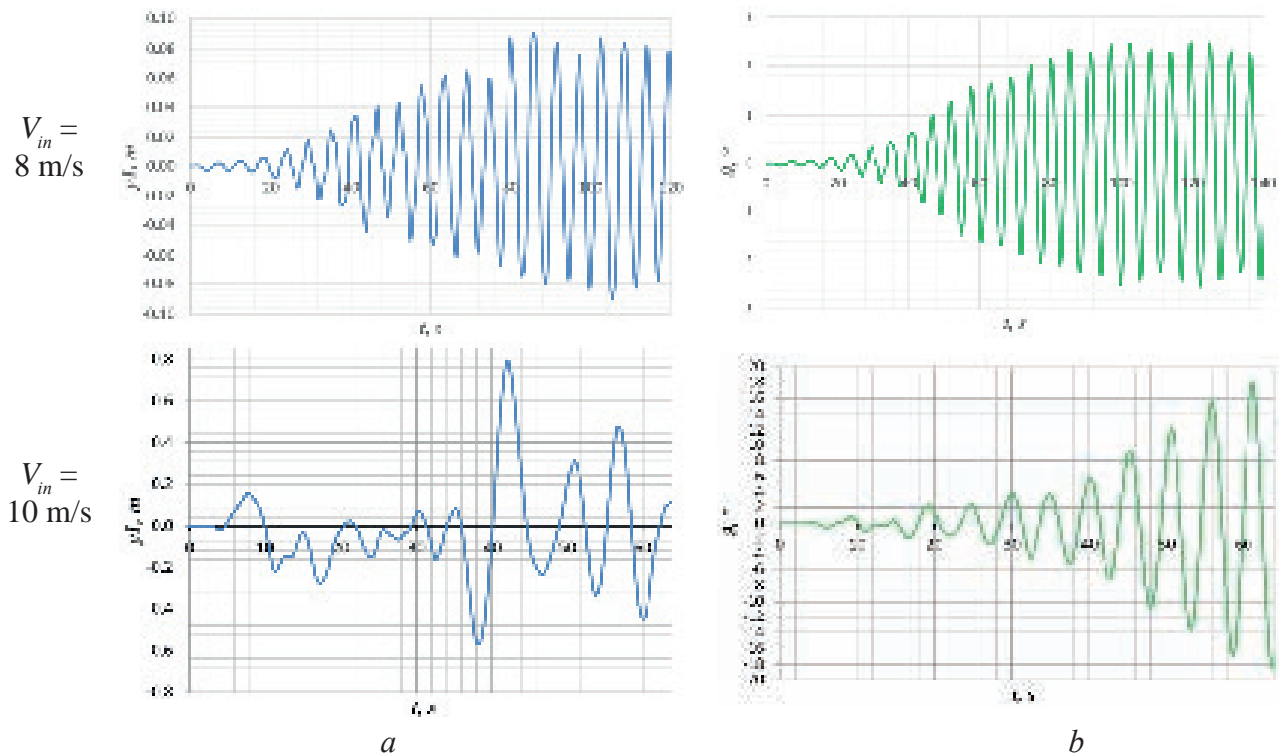


Figure 5. DES SST model: Graphs versus time t, s at different speeds
 a - vertical movement of point 1, m; b - angle of rotation $\vartheta, ^\circ$

vertical dynamic displacement of point 1 and the angle of rotation ϑ on time t for flow velocities of 8 m / s and 10 m / s for the DES SST turbulence model. Fig. 6 presents graphs of the dependences of the vertical displacement of point 1 and the angle of rotation ϑ on time t for flow velocities V_{in} equal to 10 m / s, 12 m / s and 15 m / s for the URANS $k-\omega$ SST turbulence model. Fig. 7 shows the velocity fields at different times for the DES SST turbulence model at a flow velocity of 10 m / s. Fig. 8 presents velocity fields at different times for the URANS SST turbulence model at a flow velocity of 15 m / s.

Based on the results of calculations in a coupled formulation for different flow rates, the vertical displacement of *point 1* and the angle of rotation

ϑ from time t were obtained. Loss of stability was determined by an infinitely increasing displacement and / or angle of rotation. Table 2 shows a comparison of the critical velocity values in [39] (experimental and numerical simulation results) and this study.

Comparing the results, it can be noted that the value of the critical velocity for the URANS $k-\omega$ SST turbulence model is overestimated, in contrast to the results presented in [39]. This is partly due to the fact that this turbulence model can underestimate the pulsation components of aerodynamic loads, as well as thin out the frequency spectrum, which in turn did not show aerodynamic instability for speeds of 10 m / s and 12 m / s. For the DES SST turbulence model,

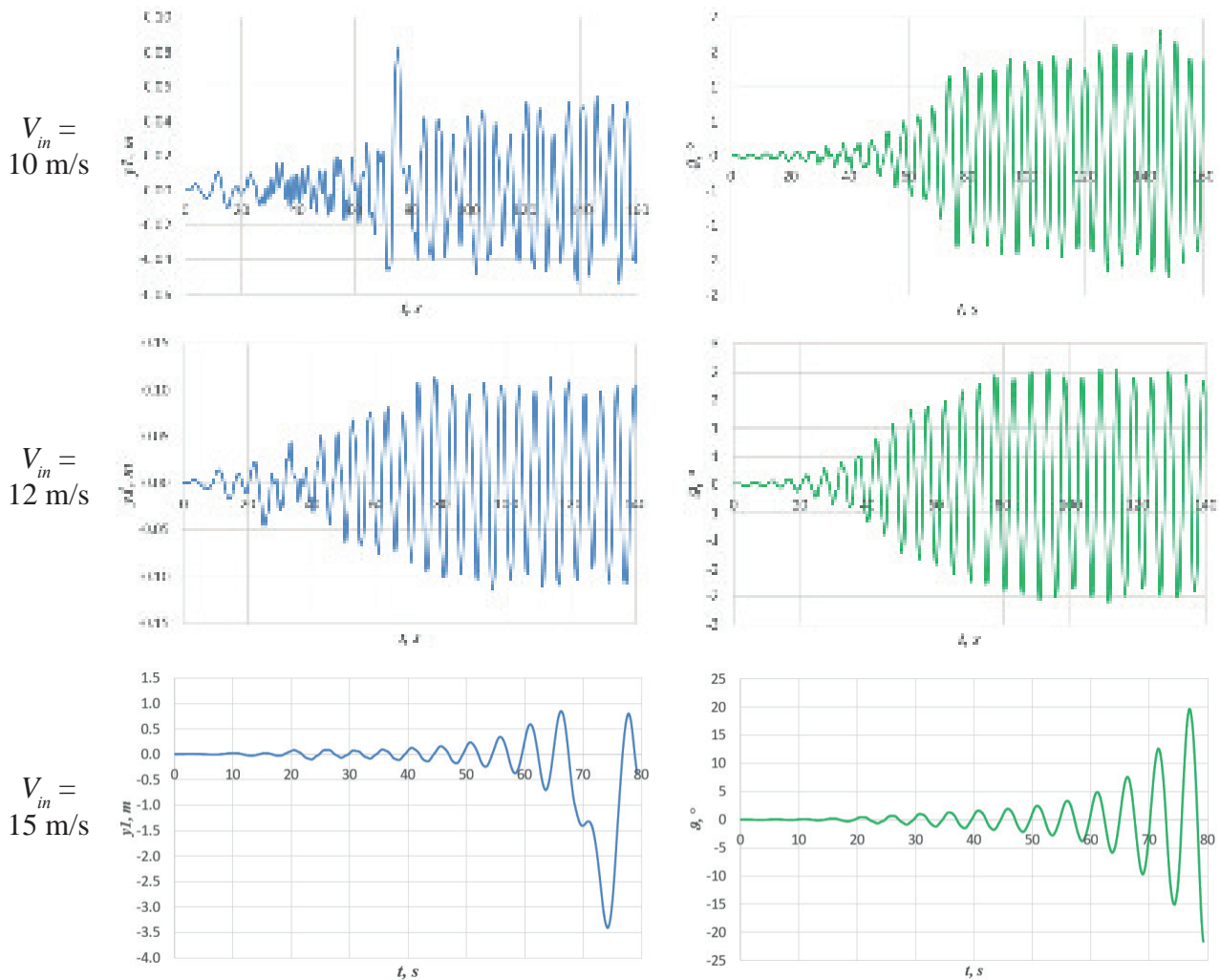


Figure 6. Model URANS $k-\omega$ SST: Graphs versus time t , s at different speeds
 a – vertical movement of point 1, m; b – angle of rotation ϑ , $^{\circ}$

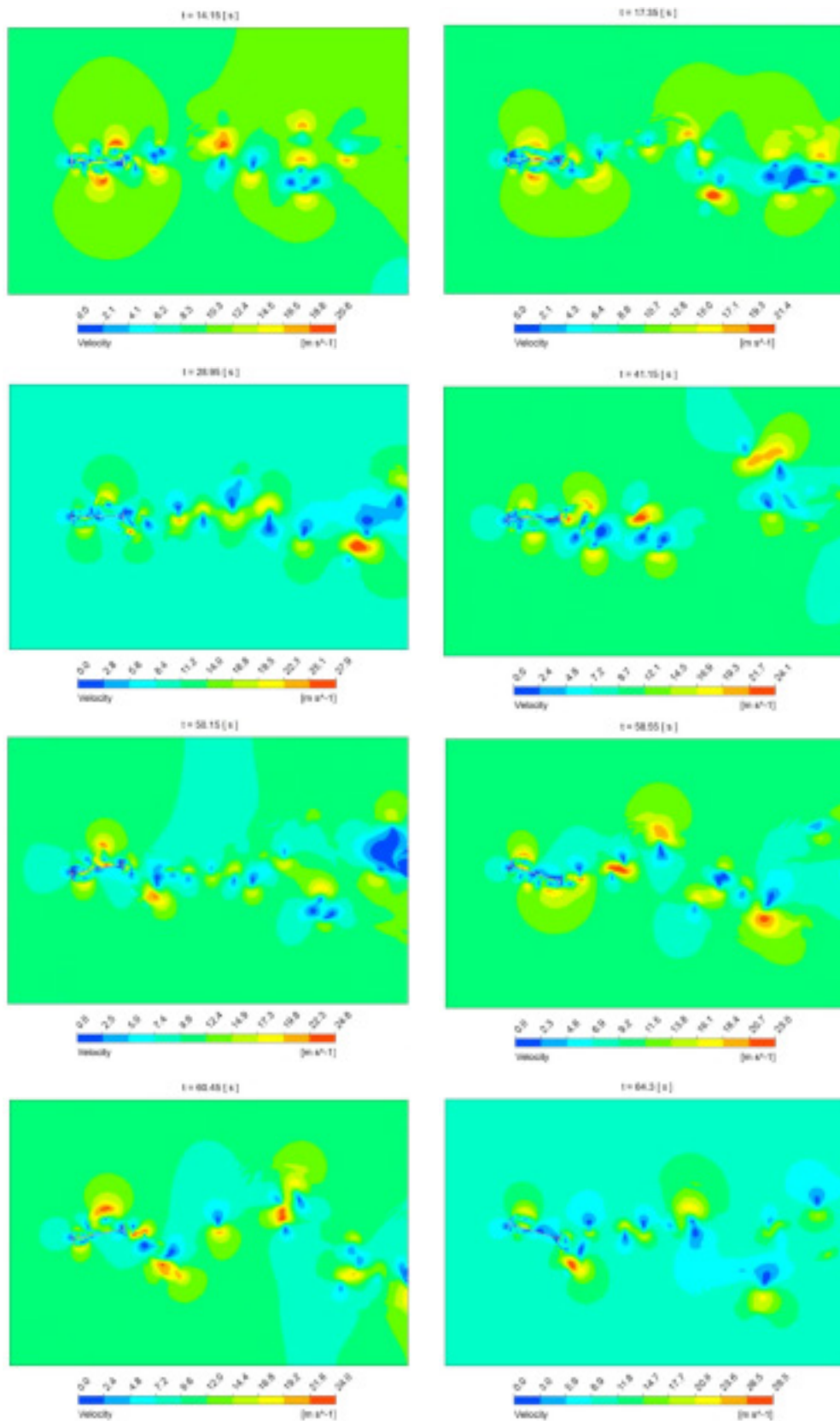


Figure 7. Velocity fields, m/s at different times t, s for a velocity $V_{in} = 10 m/s$ (DES SST turbulence model)

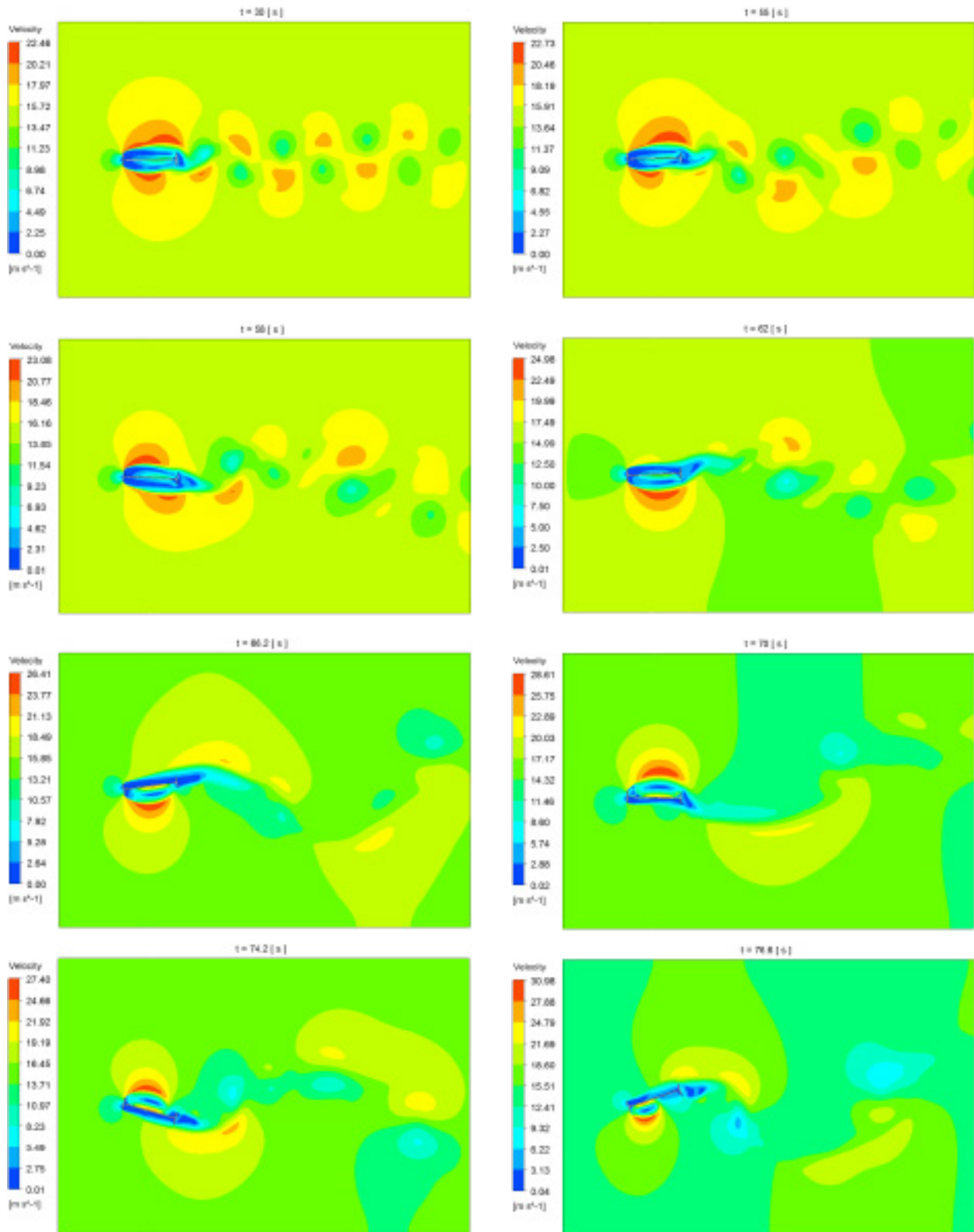


Figure 8. Velocity fields, m / s at different times t , s for a velocity $V_{in} = 15 m / s$ (turbulence model URANS $k-\omega$ SST)

the result was similar to the numerical simulation result in [39], where the LES turbulence model was used. The critical speeds can be clarified by additional calculations, but this does not affect the conclusions of this study.

4.2. Comparison of Engineering Estimates and Direct Coupled Calculation

Comparison of the results of direct coupled calculation and engineering estimates [40] revealed the following.

For the DES SST turbulence model:

- according to the engineering estimate of the divergence occurrence [40], at 0° the critical speed is 7.91 m/s . The related calculation showed that at an input flow velocity of 8 m/s there was no unlimited increase in the angle of rotation of the section - it was observed at a speed of 10 m/s ;
- according to an engineering assessment of the occurrence of galloping [40], this phenomenon

should occur at a cross-sectional angle of rotation equal to 10° at a flow velocity of 9.77 m/s . From the graphs of the dependence of the angle of rotation of the section $\vartheta, ^\circ$ and the vertical displacement of point 1, m , on time t, s at an input flow rate of 10 m/s , it can be seen that when the angle of rotation of the section approaches 10° (time 38–47 sec) significant jump in vertical displacement. This indicates a possible galloping effect at this moment. Nevertheless, further vertical vibrations of the structure returned to a stable mode (with a rapid increase in the amplitude of the rotation angle). This indicates a complex mutual influence of two aerodynamic instabilities, in which they may not arise, taking into account the vibrations of the structure along other degrees of freedom. In this calculated variant, divergence prevails over galloping.

For the turbulence model URANS $k-\omega$ SST:

- according to an engineering estimate of the occurrence of divergence [40], at 0° the critical speed was 17.18 m/s . A related calculation showed that even at an input flow velocity of 15 m/s , an unlimited increase in the angle of rotation of the section was observed;
- according to an engineering estimate of the occurrence of galloping [40], at a cross-sectional angle of rotation equal to 8° at a flow velocity of 5.76 m/s , we should observe this phenomenon. If we look at the graphs of the dependence of the angle of rotation of the section $\vartheta, ^\circ$ and the vertical

Table 2. Comparison of the results obtained in the related FSI setting with the results [39]

	$V_{CR}, \text{ m/s}$
Experiment [39]	11.5
FSI [39]	10
FSI (turbulence model URANS SST)	15
FSI (turbulence model DES SST)	10

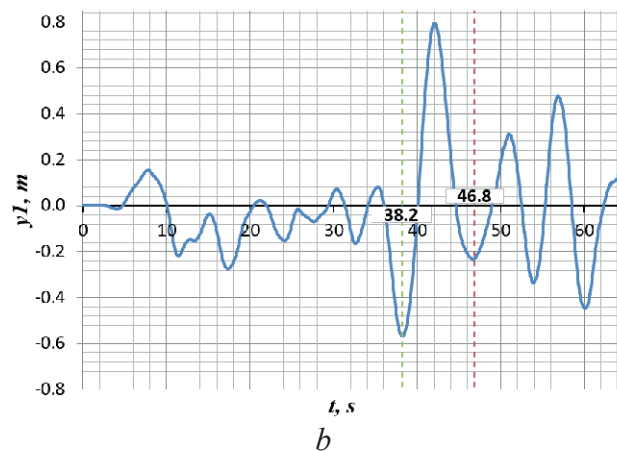
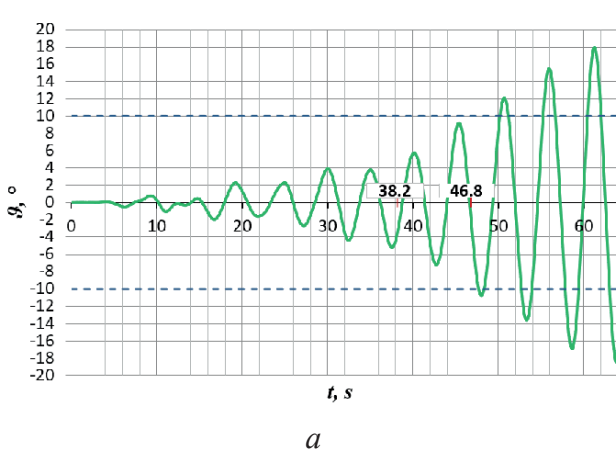


Figure 9. Turbulence model DES SST, $V_{in} = 10 \text{ m/s}$: Graphs of dependence on time t, s (a) rotation angle $\vartheta, ^\circ$; (b) vertical movement of point 1, m

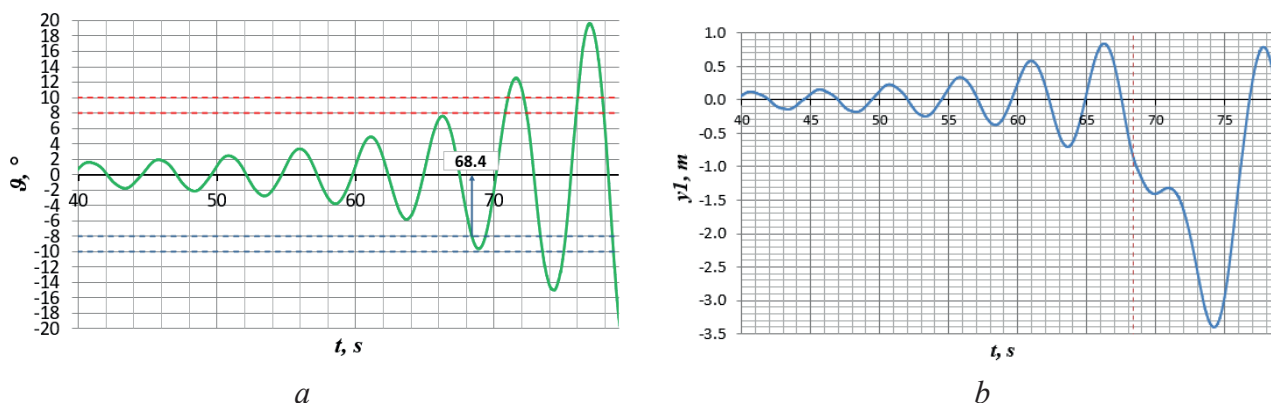


Figure 10. Turbulence model URANS $k-\omega$ SST, $V_{in} = 15$ m / s: Graphs of dependence on time t , s (a) rotation angle ϑ , $^\circ$; (b) vertical movement of point 1, m

displacement of point 1, m on time t , s at an input flow velocity of 15 m / s, we can see that the angle of rotation of the section equal to 8° is reached at the moment of time 68.4 s. Therefore, at about this point in time, galloping should be observed. Indeed, at about this moment in time, there is a sharp increase in the amplitude of the vertical displacement of point 1 (the center of the section).

5. CONCLUSION

On the considered two-dimensional problem of aeroelasticity, it is shown that it is quite acceptable to use a lighter, in comparison with LES, DES turbulence model and a coarser mesh (in comparison with “reference” numerical solutions). This will allow in the near future to take an important step towards a full 3D computational model with reasonable computing power. Also, a test problem with a Tacoma bridge section showed that, although engineering techniques provide estimates of the possible occurrence of aerodynamic instability, they do not take into account the reverse effect of the structure on the flow and the mutual influence of several types of aerodynamic instability. Comparison of the results showed that such inaccuracies both underestimate and overestimate the calculated critical wind flow velocities, which can have detrimental practical consequences.

6. ACKNOWLEDGMENTS

This work was financially supported by the Ministry of Science and Higher Education of the Russian Federation (Project: Theoretical and experimental design of new composite materials to ensure safety during the operation of buildings and structures under conditions of technogenic and biogenic threats #FSWG-2020-0007) (4.1. Results of solving the problem in a related setting) and RFBR, project number 19-31-90128 (4.2. Comparison of Engineering Estimates and Direct Associated Calculation).

REFERENCES

1. **Karman T.** Aerodinamika. Izbrannyye temy v ikh istoricheskom razvitiy [Aerodynamics. Selected topics in their historical development]. Izhevsk: NITS "Regulyarnaya i khaoticheskaya dinamika", 2001. 207 p.
2. **Davenport A.G.** The application of statistical concepts to the wind loading of structures. Proceedings of the Institution of Civil Engineers. 1961. 19(4). Pp. 449–472. DOI:10.1680/iicep.1961.11304.
3. **Davenport A.G.** Buffeting of a suspension bridge by storm winds. Journal of structural

- Division. 1962. 88(3). Pp. 233–268. DOI:10.4319/lo.2013.58.2.0489.
4. **Barshteyn M.F.** Dinamicheskiy raschet vysokikh sooruzheniy na deystviye vetra [Dynamic calculation of tall structures for the action of the wind]. // In the book: Spravochnik po dinamike sooruzheniy [Reference book on the dynamics of structures]. Under ed. B.G. Korenev, I.M. Rabinovich. Moscow: Stroyizdat, 1972. Pp. 286-321.
 5. **Simiu, E., Scanlan, R.H.** Wind effects on structures: an introduction to wind engineering. 1978. DOI:10.1016/0167-6105(80)90031-8.
 6. **Scanlan R.H., Stroh S.L., Raggett, J.D.** Methods of wind response investigation employed for the Kap Shui Mun Bridge. Journal of Wind Engineering and Industrial Aerodynamics. 1995. 54–55(C). Pp. 1–11. DOI:10.1016/0167-6105(94)00024-8.
 7. **Katsuchi, H., Jones, N.P., Scanlan, R.H., Akiyama, H.** A study of mode coupling in flutter and buffeting of the Akashi-Kaikyo bridge. Structural Engineering/Earthquake Engineering. 1998. 15(2). DOI:10.2208/jscej.1998.598_21.
 8. **Scanlan, R.H.** Estimates of skew wind speeds for bridge flutter. Journal of Bridge Engineering. 1999. 4(2). Pp. 95–98. DOI:10.1061/(ASCE)1084-0702(1999)4:2(95).
 9. Den Hartog JP Mechanical vibrations // New York; London: McGraw-Hill, 1956. 436 p.
 10. EN 1991-1-4. Eurocode 1: Actions on structures - Part 1-4: General actions - Wind actions. European Committee for Standardization. 2005. DOI:ICS 91.010.30; 93.040.
 11. ASCE 7-16 Minimum Design Loads and Associated Criteria for Buildings and Other Structures.
 12. Building Code of RF SP 20.13330.2016 Nagruzki i vozdeystviya [Loads and actions].
 13. **Kazakevich M.I.** Aerodinamika mostov [Aerodynamics of bridges]. Moscow: Transport, 1987. 240 p.
 14. **Gorlin S.M.** Eksperimental'naya aerodinamika [Experimental aerodynamics]. Moscow: «Vysshaya shkola», 1970. 423 p.
 15. **Davenport A.G.** Gust loading factors. Proc. of American soc. of civil Engineering. Vol. 93 (1), No. ST3 – 1967.
 16. **Wei Z., Kareem A.** A benchmark study of flow around a rectangular cylinder with aspect ratio 1:5 at Reynolds number 1.E5. 13th International Conference on Wind Engineering, Proceedings, July 10-15, 2011
 17. **Blocken B., Stathopoulos T., Carmeliet J.** CFD simulation of atmospheric boundary layer-wall function problems. Atmospheric Environment, vol. 41 (2), 2007 – pp. 238-252.
 18. **Wall, W.A., Ramm, E.** Fluid-structure interaction based upon a stabilized (ALE) finite element method. Computational Mechanics. 1998. Pp. 1–20.
 19. **Robertson, I., Sherwin, S.J., Bearman, P.W.** Flutter instability prediction techniques for bridge deck sections. International Journal for Numerical Methods in Fluids. 2003. DOI:10.1002/flid.535.
 20. **Costa, C., Borri, C.** Application of indicial functions in bridge deck aeroelasticity. Journal of Wind Engineering and Industrial Aerodynamics. 2006. 94(11). Pp. 859–881. DOI:10.1016/j.jweia.2006.06.007.
 21. **Šarkić, A., Höffer, R.** Improved numerical simulation of bridge deck aeroelasticity by model validation. 6th European and African Conference on Wind Engineering, EACWE 2013. 2013.
 22. **Wu, T., Kareem, A.** Bridge aerodynamics and aeroelasticity: A comparison of modeling schemes. Journal of Fluids and Structures. 2013. 43. Pp. 347–370. DOI:10.1016/j.jfluidstructs.2013.09.015.
 23. **Wu, T., Kareem, A.** Aerodynamics and aeroelasticity of cable-supported bridges: Identification of nonlinear features. Journal of Engineering Mechanics. 2013. 139(12). Pp. 1886–1893. DOI:10.1061/(ASCE)EM.1943-7889.0000615.

24. **Zhan, H., Fang, T., Zhang, Z.** Flutter stability studies of Great Belt East suspension Bridge by two CFD numerical simulation methods. 6th European and African Conference on Wind Engineering, EACWE 2013. 2013.
25. **Xu, Y.L., Hu, L., Kareem, A.** Conditional simulation of nonstationary fluctuating wind speeds for long-span bridges. *Journal of Engineering Mechanics*. 2014. 140(1). Pp. 61–73. DOI:10.1061/(ASCE)EM.1943-7889.0000589.
26. **Mannini, C., Bartoli, G.** Aerodynamic uncertainty propagation in bridge flutter analysis. *Structural Safety*. 2015. 52(PA). Pp. 29–39. DOI:10.1016/j.strusafe.2014.07.005.
27. **Xu, F., Wu, T., Ying, X., Kareem, A.** Higher-order self-excited drag forces on bridge decks. *Journal of Engineering Mechanics*. 2016. 142(3). DOI:10.1061/(ASCE)EM.1943-7889.0001036.
28. **Kavrov, I., Morgenthal, G.** A synergistic study of a CFD and semi-analytical models for aeroelastic analysis of bridges in turbulent wind conditions. *Journal of Fluids and Structures*. 2018. 82. Pp. 59–85. DOI:10.1016/j.jfluidstructs.2018.06.013.
29. **Kavrov, I., Legatiuk, D., Gürlebeck, K., Morgenthal, G.** A categorical perspective towards aerodynamic models for aeroelastic analyses of bridge decks. *Royal Society Open Science*. 2019. DOI:10.1098/rsos.181848.
30. **Zhang, M., Xu, F., Zhang, Z., Ying, X.** Energy budget analysis and engineering modeling of post-flutter limit cycle oscillation of a bridge deck. *Journal of Wind Engineering and Industrial Aerodynamics*. 2019. 188. Pp. 410–420. DOI:10.1016/j.jweia.2019.03.010.
31. **Belostotskiy A.M., Akimov P.A., Afanas'yeva I.N.** Vychislitel'naya aerodinamika v zadachakh stroitel'stva [Computational aerodynamics in construction problems]. Moscow: Publishing ASV, 2017, 720 p.
32. Metodicheskoye posobiye «Matematicheskoye (chislennoye) modelirovaniye vetrovykh nagruzok i vozdeystviy» (k SP 20.13330.2016) [Methodological manual "Mathematical (numerical) modeling of wind loads and effects" (to SP 20.13330.2016)], Moscow, FAU FTSS Minstroya Rossii, 2020
33. **Belostotskiy A.M., Afanas'yeva I.N.** Chislennoye modelirovaniye zadach aerouprugosti v stroitel'stve [Numerical modeling of aeroelasticity problems in construction]. *Vysotnyye zdaniya*. 2015. №1. Pp. 106-109.
34. **Afanas'yeva I.N.** Adaptivnaya metodika chislennogo modelirovaniya trekhmernykh dinamicheskikh zadach stroitel'noy aerogidrouprugosti [An adaptive technique for numerical modeling of three-dimensional dynamic problems of construction aerohydroelasticity]. Diss. Of Candidate of Technical Sciences. M., MGSU, 2014. 200 p.
35. **Belostotskiy, A.M., Afanasyeva, I.N., Lantsova, I.Y., Petryashev, S.O., Petryashev, N.O.** Estimation of aerodynamic instability of building structures //Procedia Structural Integrity. – 2017. – Vol. 6. – Pp. 322-329.
36. **Lantsova I., Afanasyeva I.** Investigation of aerodynamic instability of a thin plate //MATEC Web of Conferences. – EDP Sciences, 2017. – Vol. 117. – 00099.
37. **Afanasyeva I. N., Lantsova I. Y.** Numerical simulation of an elastic structure behavior under transient fluid flow excitation. *AIP Conference Proceedings*. – AIP Publishing LLC, 2017. – Vol. 1800. – No. 1. . 040013
38. **Afanas'yeva I.N.** Modelirovaniye dvumernogo nestatsionarnogo obtekaniya gibkoy uprugoy konstruksii v svyazannoy postanovke. Chast' 3: verifikatsiya metodiki chislennogo modelirovaniya svyazannoy zadachi aerogidrouprugosti [Simulation of two-dimensional unsteady flow around a flexible elastic structure in a coupled setting. Part 3: verification of the methodology for numerical modeling of the coupled aerohydroelasticity problem]. *International Journal for Computational Civil and Structural Engineering*. – 2014. – Vol. 10. – No. 3. – Pp. 40-48.

39. **Zhan H, Fang T.** Flutter stability studies of Great Belt East Bridge and Tacoma Narrows Bridge by CFD numerical simulation. Proceedings of the 7th International Colloquium on Bluff Body Aerodynamics and Applications (BBA7). Shanghai, 2012. Pp. 1518-1527.
40. **Lantsova I.YU., Afanas'yeva I.N.** Modelirovaniye aerodinamicheskoy neustoychivosti stroitel'nykh konstruksiy na primere secheniya mosta chast' 1: otsenka aerodinamicheskoy neustoychivosti secheniya inzhenernymi metodami [Modeling aerodynamic instability of building structures on the example of a bridge section, part 1: estimation of aerodynamic instability of a section by engineering methods]. IJCCSE, vol. 14, issue 1, 2018.
7. **Katsuchi, H., Jones, N.P., Scanlan, R.H., Akiyama, H.** A study of mode coupling in flutter and buffeting of the Akashi-Kaikyo bridge. Structural Engineering/Earthquake Engineering. 1998. 15(2). DOI:10.2208/jsej.1998.598_21.
8. **Scanlan, R.H.** Estimates of skew wind speeds for bridge flutter. Journal of Bridge Engineering. 1999. 4(2). Pp. 95–98. DOI:10.1061/(ASCE)1084-0702(1999)4:2(95).
9. Den Hartog JP Mechanical vibrations // New York; London: McGraw-Hill, 1956. 436 p.
10. EN 1991-1-4. Eurocode 1: Actions on structures – Part 1–4: General actions – Wind actions. European Committee for Standardization. 2005. DOI:ICS 91.010.30; 93.040.
11. ASCE 7-16 Minimum Design Loads and Associated Criteria for Buildings and Other Structures.
12. СП 20.13330.2016 Нагрузки и воздействия
13. **Казакевич М.И.** Аэродинамика мостов. // М.: Транспорт, 1987. – 240 с.
14. **Горлин С.М.** Экспериментальная аэродинамика. // М.: «Высшая школа», 1970. – 423 с.
15. Davenport A.G. Gust loading factors. Proc. of American soc. of civil Engineering. Vol. 93 (1), No. ST3 – 1967.
16. **Wei Z., Kareem A.** A benchmark study of flow around a rectangular cylinder with aspect ratio 1:5 at Reynolds number 1.E5. 13th International Conference on Wind Engineering, Proceedings, July 10-15, 2011
17. **Blocken B., Stathopoulos T., Carmeliet J.** CFD simulation of atmospheric boundary layer-wall function problems. Atmospheric Environment, vol. 41 (2), 2007 – pp. 238-252.
18. **Wall, W.A., Ramm, E.** Fluid-structure interaction based upon a stabilized (ALE) finite element method. Computational Mechanics. 1998. Pp. 1–20.
19. **Robertson, I., Sherwin, S.J., Bearman, P.W.** Flutter instability prediction techniques for

СПИСОК ЛИТЕРАТУРЫ

1. **Карман Т.** Аэродинамика. Избранные темы в их историческом развитии. Ижевск: НИЦ "Регулярная и хаотическая динамика", 2001. 207 стр.
2. **Davenport A.G.** The application of statistical concepts to the wind loading of structures. Proceedings of the Institution of Civil Engineers. 1961. 19(4). Pp. 449–472. DOI:10.1680/iicp.1961.11304.
3. **Davenport A.G.** Buffeting of a suspension bridge by storm winds. Journal of structural Division. 1962. 88(3). Pp. 233–268. DOI:10.4319/lo.2013.58.2.0489.
4. **Барштейн М.Ф.** Динамический расчет высоких сооружений на действие ветра. // В кн.: Справочник по динамике сооружений. Под ред. Б.Г. Коренева, И.М. Рабиновича. М., Стройиздат, 1972–. с. 286-321.
5. **Simiu, E., Scanlan, R.H.** Wind effects on structures: an introduction to wind engineering. 1978. DOI:10.1016/0167-6105(80)90031-8.
6. **Scanlan R.H., Stroh S.L., Raggett, J.D.** Methods of wind response investigation employed for the Kap Shui Mun Bridge. Journal of Wind Engineering and Industrial Aerodynamics. 1995. 54–55(C). Pp. 1–11. DOI:10.1016/0167-6105(94)00024-8.

- bridge deck sections. *International Journal for Numerical Methods in Fluids*. 2003. DOI:10.1002/flid.535.
20. **Costa, C., Borri, C.** Application of indicial functions in bridge deck aeroelasticity. *Journal of Wind Engineering and Industrial Aerodynamics*. 2006. 94(11). Pp. 859–881. DOI:10.1016/j.jweia.2006.06.007.
 21. **Šarkić, A., Höffer, R.** Improved numerical simulation of bridge deck aeroelasticity by model validation. 6th European and African Conference on Wind Engineering, EACWE 2013. 2013.
 22. **Wu, T., Kareem, A.** Bridge aerodynamics and aeroelasticity: A comparison of modeling schemes. *Journal of Fluids and Structures*. 2013. 43. Pp. 347–370. DOI:10.1016/j.jfluidstructs.2013.09.015.
 23. **Wu, T., Kareem, A.** Aerodynamics and aeroelasticity of cable-supported bridges: Identification of nonlinear features. *Journal of Engineering Mechanics*. 2013. 139(12). Pp. 1886–1893. DOI:10.1061/(ASCE)EM.1943-7889.0000615.
 24. **Zhan, H., Fang, T., Zhang, Z.** Flutter stability studies of Great Belt East suspension Bridge by two CFD numerical simulation methods. 6th European and African Conference on Wind Engineering, EACWE 2013. 2013.
 25. **Xu, Y.L., Hu, L., Kareem, A.** Conditional simulation of nonstationary fluctuating wind speeds for long-span bridges. *Journal of Engineering Mechanics*. 2014. 140(1). Pp. 61–73. DOI:10.1061/(ASCE)EM.1943-7889.0000589.
 26. **Mannini, C., Bartoli, G.** Aerodynamic uncertainty propagation in bridge flutter analysis. *Structural Safety*. 2015. 52(PA). Pp. 29–39. DOI:10.1016/j.strusafe.2014.07.005.
 27. **Xu, F., Wu, T., Ying, X., Kareem, A.** Higher-order self-excited drag forces on bridge decks. *Journal of Engineering Mechanics*. 2016. 142(3). DOI:10.1061/(ASCE)EM.1943-7889.0001036.
 28. **Kavtrakov, I., Morgenthal, G.** A synergistic study of a CFD and semi-analytical models for aeroelastic analysis of bridges in turbulent wind conditions. *Journal of Fluids and Structures*. 2018. 82. Pp. 59–85. DOI:10.1016/j.jfluidstructs.2018.06.013.
 29. **Kavtrakov, I., Legatiuk, D., Gürlebeck, K., Morgenthal, G.** A categorical perspective towards aerodynamic models for aeroelastic analyses of bridge decks. *Royal Society Open Science*. 2019. DOI:10.1098/rsos.181848.
 30. **Zhang, M., Xu, F., Zhang, Z., Ying, X.** Energy budget analysis and engineering modeling of post-flutter limit cycle oscillation of a bridge deck. *Journal of Wind Engineering and Industrial Aerodynamics*. 2019. 188. Pp. 410–420. DOI:10.1016/j.jweia.2019.03.010.
 31. **Белостоцкий А.М., Акимов П.А., Афанасьева И.Н.** Вычислительная аэродинамика в задачах строительства. М., Издательство АСВ, 2017, 720 с.
 32. Методическое пособие «Математическое (численное) моделирование ветровых нагрузок и воздействий» (к СП 20.13330.2016), М., ФАУ ФЦС Минстроя России, 2020
 33. **Белостоцкий А.М., Афанасьева И.Н.** Численное моделирование задач аэроупругости в строительстве. *Высотные здания №1* (2015), М., 2015. – стр. 106–109.
 34. **Афанасьева И.Н.** Адаптивная методика численного моделирования трехмерных динамических задач строительной аэрогидроупругости. Дисс. на соискание ученой степени к.т.н. М., МГСУ, 2014. – 200 с
 35. **Belostotsky, A.M., Afanasyeva, I.N., Lantsova, I.Y., Petryashev, S.O., Petryashev, N.O.** Estimation of aerodynamic instability of building structures // *Procedia Structural Integrity*. – 2017. – Т. 6. – С. 322-329.
 36. **Lantsova I., Afanasyeva I.** Investigation of aerodynamic instability of a thin plate // *MATEC Web of Conferences*. – EDP Sciences, 2017. – Т. 117. – С. 00099.
 37. **Afanasyeva I.N., Lantsova I.Y.** Numerical simulation of an elastic structure behavior under transient fluid flow excitation // *AIP*

- Conference Proceedings. – AIP Publishing LLC, 2017. – Т. 1800. – №. 1. – С. 040013
38. **Афанасьева И.Н.** Моделирование двумерного нестационарного обтекания гибкой упругой конструкции в связанной постановке. Часть 3: верификация методики численного моделирования связанной задачи аэрогидроупругости // *International Journal for Computational Civil and Structural Engineering*. – 2014. – Т. 10. – №. 3. – С. 40–48.
39. **Zhan H, Fang T.** Flutter stability studies of Great Belt East Bridge and Tacoma Narrows Bridge by CFD numerical simulation. Proceedings of the 7th International Colloquium on Bluff Body Aerodynamics and Applications (BBAA7). Shanghai, 2012. Pp. 1518-1527.
40. **Ланцова И.Ю., Афанасьева И.Н.** Моделирование аэродинамической неустойчивости строительных конструкций на примере сечения моста часть 1: оценка аэродинамической неустойчивости сечения инженерными методами // *IJCCSE*, vol. 14, issue 1, 2018.

Alexander M. Belostotsky, corresponding member of RAACS, professor, doctor of technical sciences; General Director of CJSC Scientific Research Center StaDiO; Professor of the Department of Informatics and Applied Mathematics of the National Research Center, scientific director of the REC KM named after A.B. Zolotov Moscow State University of Civil Engineering; Professor of the Department of Building Structures, Buildings and Structures of the Russian University of Transport (МИИТ); 125040, Russia, Moscow, st. 3rd Yamskogo Polya, 18, office 810; Tel. +7 (499) 706-88-10. E-mail: amb@stadyo.ru

Irina N. Afanasyeva, Candidate of Technical Sciences, Leading Calculation Engineer, JSC Scientific Research Center StaDiO; assistant at the University of Florida (USA); 125040, Russia, Moscow, st. 3rd Yamskogo Polya, 18, 8th floor, office 810, tel. +7 (495) 706-88-10. E-mail: irina.n.afanasyeva@gmail.com.

Irina Yu. Negrozova, Junior Researcher, REC KM named after V.I. A.B. Zolotova and Senior Lecturer of the Department of Informatics and Applied Mathematics of the National Research Moscow State University of Civil Engineering; 129337, Russia, Moscow, Yaroslavskoe shosse, 26. E-mail: LantsovaIYu@mgsu.ru.

Oleg S. Goryachevsky, Lead Structural Engineer, CJSC Research Center StaDiO; Deputy Director of REC KM named after A.B. Zolotov of the National Research Moscow State University of Civil Engineering; 129337, Russia, Moscow, Yaroslavskoe shosse, 26. E-mail: osgoryachevskij@mail.ru

Белостоцкий Александр Михайлович, член-корреспондент РААСН, профессор, доктор технических наук; генеральный директор ЗАО Научно-исследовательский центр СтаДиО; профессор кафедры Информатики и прикладной математики Национального исследовательского, научный руководитель НОЦ КМ им. А.Б. Золотова Московского государственного строительного университета; профессор кафедры «Строительные конструкции, здания и сооружения» Российского университета транспорта (МИИТ); 125040, Россия, Москва, ул. 3-я Ямского Поля, д.18, офис 810; тел. +7 (499) 706-88-10. E-mail: amb@stadyo.ru

Афанасьева Ирина Николаевна, кандидат технических наук, ведущий инженер-расчетчик ЗАО Научно-исследовательский центр СтаДиО; ассистент Флоридского университета (США); 125040, Россия, г. Москва, ул. 3-я Ямского Поля, д.18, 8 этаж, офис 810, тел. +7 (495) 706-88-10. E-mail: irina.n.afanasyeva@gmail.com.

Негрозова Ирина Юрьевна, младший научный сотрудник НОЦ КМ им. А.Б. Золотова и старший преподаватель кафедры Информатики и прикладной математики Национального исследовательского Московского государственного строительного университета; 129337, Россия, г. Москва, Ярославское шоссе, д. 26. E-mail: LantsovaIYu@mgsu.ru.

Горячевский Олег Сергеевич, ведущий инженер-расчетчик ЗАО Научно-исследовательский центр СтаДиО; заместитель директора НОЦ КМ им. А.Б. Золотова Национального исследовательского Московского государственного строительного университета; 129337, Россия, г. Москва, Ярославское шоссе, д. 26. E-mail: osgoryachevskij@mail.ru